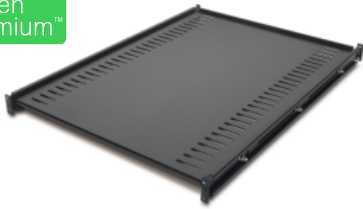


# Bảng thông số sản phẩm

Thông số kỹ thuật



## Fixed Shelf 250lbs/114kg Black

AR8122BLK

### Overview

<b>Presentation</b>	Fixed shelf to enable the mounting of tower units, monitors, and other equipment into the rack environment.
<b>Lead time</b>	Usually in Stock

### Main

<b>Number of rack unit</b>	1U
<b>Number of cables</b>	1
<b>Provided equipment</b>	Installation guide Mounting hardware

### Physical

<b>Colour</b>	Black
<b>Height</b>	4.4 cm
<b>Width</b>	47 cm
<b>Depth</b>	66 cm
<b>Product weight</b>	8.18 kg
<b>Mounting location</b>	Front
<b>Mounting preference</b>	No preference
<b>Mounting mode</b>	Rack-mounted
<b>Maximum mounting depth</b>	82.55 cm
<b>Minimum mounting depth</b>	67.31 cm
<b>Permanent permissible load</b>	113.40 kg static

### Conformance

<b>Standards</b>	EIA-310D
------------------	----------

### Packing Units

<b>Package 1 Weight</b>	10.46 kg
<b>Package 1 Height</b>	77.5 cm
<b>Package 1 width</b>	57.6 cm
<b>Package 1 Length</b>	8.9 cm

## Offer Sustainability

Sustainable offer status	Green Premium product
REACH Regulation	<a href="#">REACH Declaration</a>
REACH free of SVHC	Yes
EU RoHS Directive	Pro-active compliance (Product out of EU RoHS legal scope) <a href="#">EU RoHS Declaration</a>
Toxic heavy metal free	Yes
Mercury free	Yes
RoHS exemption information	<a href="#">Yes</a>
Take-back	Take-back program available

## Contractual warranty

Warranty	2 years repair or replace
----------	---------------------------